

Speakers Bureau Webinars

Presented by oneSOURCE

Lindsay Frkovich-Nelson

Vice President, Sales & Marketing

Speaker & Presenter

Harry Mullen, CRCST, CER, CIS, CHL

Senior Partner

Central Sterilization Solutions



onesource
DOCUMENT SITE

ONESOURCEDOCS.COM | **1-800-701-3560**

➔ Celebrating 10 years of changing the face of patient safety



onesource

DOCUMENT SITE



Celebrating 10 years of changing
the face of patient safety
The latest IFUs and PM
documents on demand.

CEU's Training During Down Time

Objectives:

- Assess Departmental Education Status
- Understand the types of opportunities you have
- Know the role of Senior leaders
- Focus on the outcome for the Customer

During slow time in a sterile processing department, the hospital often resorts

- Cutting back on staff

Save money

Not focused on the bigger picture



Is this the right approach

TRAINING



Next
LEVEL



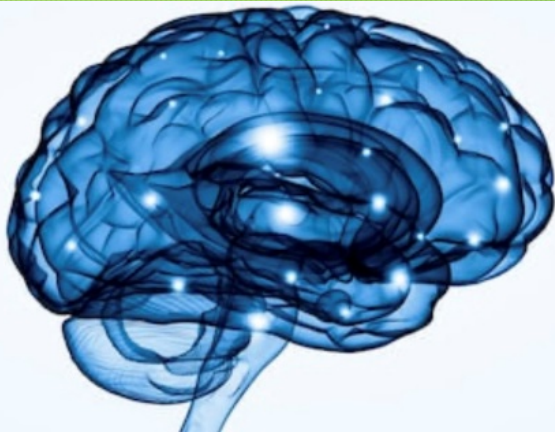
True cost

Knowledge

Skills

It will cost us:

- Not having everyone on the same page
- Different levels of understanding
- Standards not being followed
- Customer satisfaction decreases



THE STAFF





Exceptional



Outstanding

Make it the

RULE !



Assess Departmental Education Status

Is department training where it should be?

Has department education been consistent?

What is the expectation for staff when it comes to the Standards?

Do They Understand

- Regulatory
& Compliance issues
- Best practices
- Medical device reprocessing

American
National
Standard

American
National
Standard

ANSI
ST91
Flexible and
endoscope
health care

ANSI/AAMI
ST58:2013

Chemical sterilization and
high-level disinfection in
health care facilities



ANSI/AAMI ST79:2017

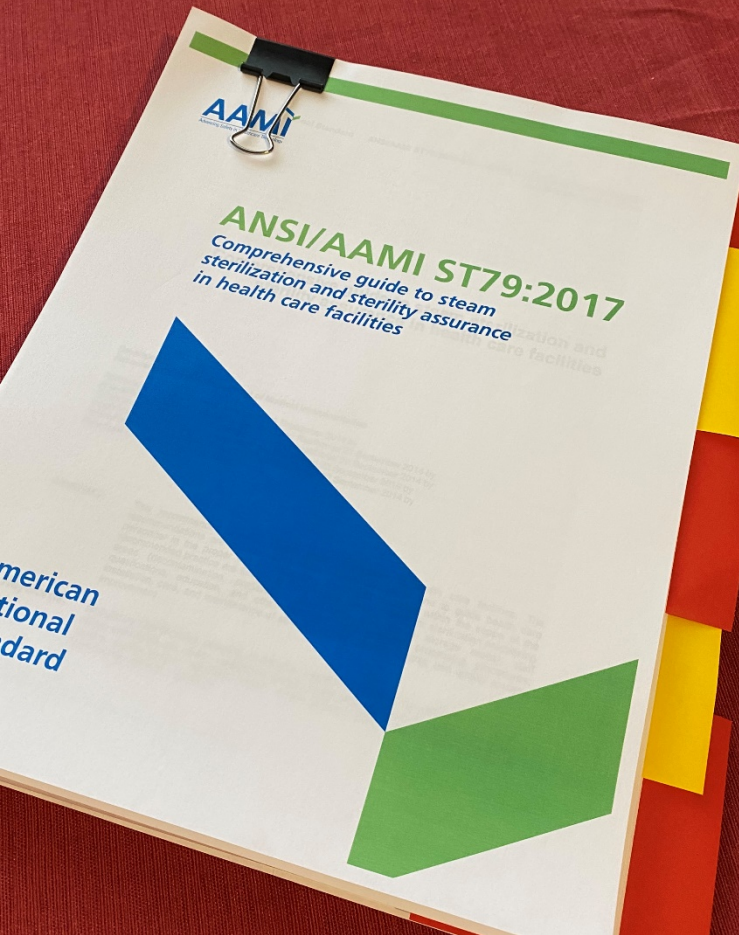
*Comprehensive guide to steam
sterilization and sterility assurance
in health care facilities*

American
National
Standard

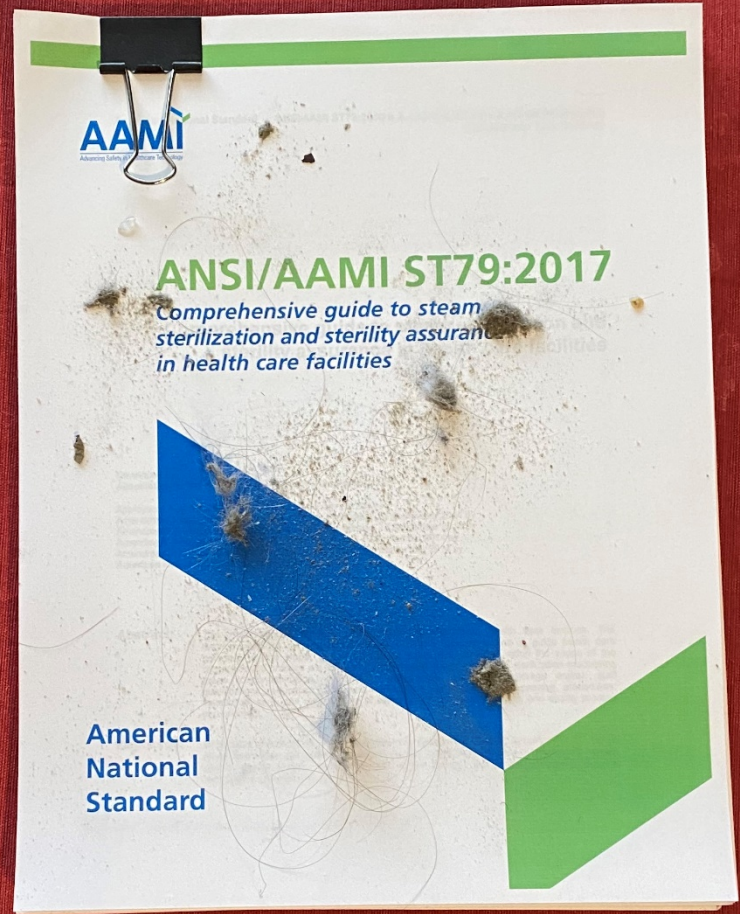
**AAMI TIR34:
2014**

Water for the reprocessing
of medical devices





OR





A hand is holding a magnifying glass with a black frame and handle. The lens of the magnifying glass is focused on the word 'COMPETENCY', which is written in a bold, red, sans-serif font. The background is white and contains several other words in a light gray, sans-serif font, arranged in two columns. The words on the right are 'REQUIREMENTS', 'RESPONSIBILITY', 'CERTIFIED', 'TRAINING', 'COMPLIANCE', 'INTEGRITY', and 'AUTHORIZED'. The words on the left are 'INDUSTRY', 'TECHNICAL', 'REGULATION', and 'DEMAND'. The magnifying glass is positioned such that the word 'COMPETENCY' is the central focus, appearing larger and more prominent than the other text.

COMPETENCY

REQUIREMENTS
RESPONSIBILITY
CERTIFIED
TRAINING
COMPLIANCE
INTEGRITY
AUTHORIZED

INDUSTRY
TECHNICAL
REGULATION
DEMAND

Vendor





SAMPLE



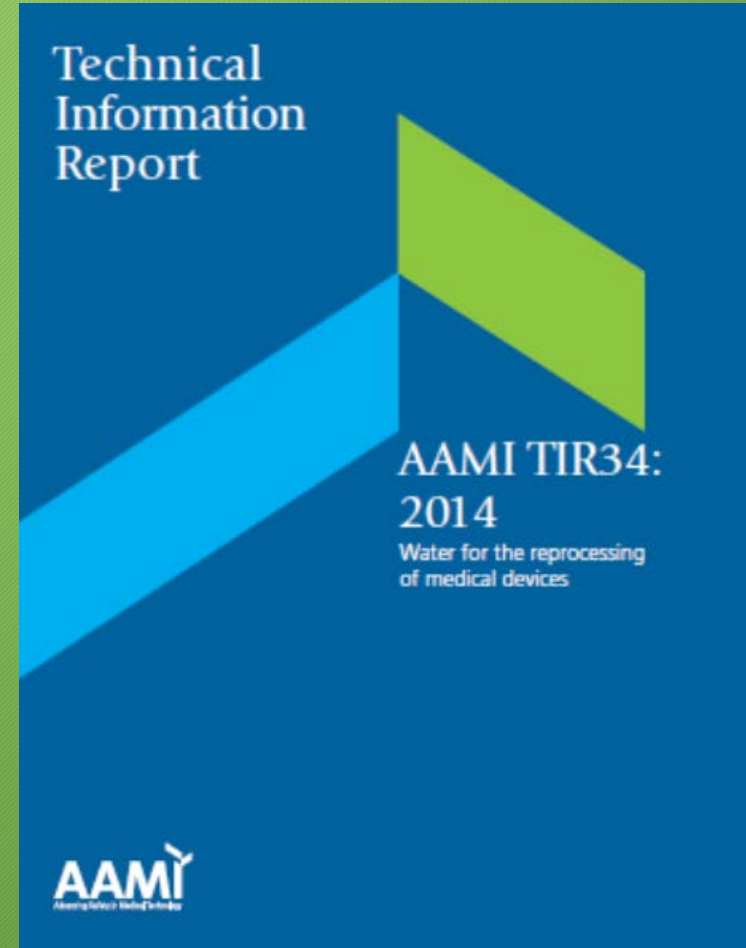
ANSI/AAMI ST79:2017

*Comprehensive guide to steam
sterilization and sterility assurance
in health care facilities*

American
National
Standard

ST79 is the primary document used by surveyors for the basis of recommended practices for a central service department.

TIR34 - covers water for the processing of medical devices. This technical report covers the selection and maintenance of effective water quality suitable for reprocessing medical devices.



AAMI STANDARDS

ARE FOUNDATIONAL

Regulatory issues

- ST79 Comprehensive guide to steam sterilization
- Tir 34 Water for the reprocessing of medical devices
- ST58 Chemical sterilization and high-level disinfection
- ST91 Flexible and semi-rigid endoscope processing

Clear expectations for staff to understand them

In order to follow BEST PRACTICES

- IFU understanding
- Departmental policy and procedures
- Infection prevention guidelines

Can we do training the entire time?





What does the SPD experience?

- Multiple trays opened but not organized
- Instruments not prepped before sending to Decon

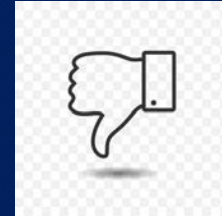
Point Of Use Customer Education / Training

- Appropriate role for point of use departments

Properly



Improperly



Impact on SPD





OPPORTUNITY

CS

USER DEPT.



How can we build a bridge together?



Cross Functional Team

- Multi-Disciplinary Team meetings to discuss joint issues





COACHING



TEACHING



KNOWLEDGE

TRAINING



SKILLS



LEARN

EXPERIENCE

DEVELOPMENT





Lean six sigma

Improve departmental processes

Learn process improvement tools

Critically thinking



NEXT
OPPORTUNITY

Continuing Education

World of medical device processing constantly changing

Ensure time is carved out for CE's

Certification is essential for staff professionalism

CMS requirement

Joint Commission requirement

Continuing Education helps maintain certification

Advocate For Training of Staff

Value to facility

Value to employee

Confident

Competent

Retention (invested in my education)

Promotes Loyalty

In Closing

Must be PATIENT focus!

All activities including training must be geared towards improving patient outcomes

Responding to situations



LOCAL

GLOBAL



IMPROVE

A hand-drawn diagram on a white background. The word "IMPROVE" is written in bold, black, uppercase letters. It is enclosed within a hand-drawn red circle. Several black arrows point towards the circle from different directions: one from the top right, one from the bottom right, and one from the bottom left. A hand holding a black marker is visible on the right side of the image, positioned as if it has just finished drawing the circle or is about to draw another arrow.

Make your
Department the

RULE !

THANK YOU

To receive your 1.0 credit certificate from ONESOURCE and IAHCSCMM, please fill out and submit the form at

onesourcedocs.com/cecredit2



onesource
DOCUMENT SITE

ONESOURCEDOCS.COM | **1-800-701-3560**

➔ Celebrating 10 years of changing the face of patient safety